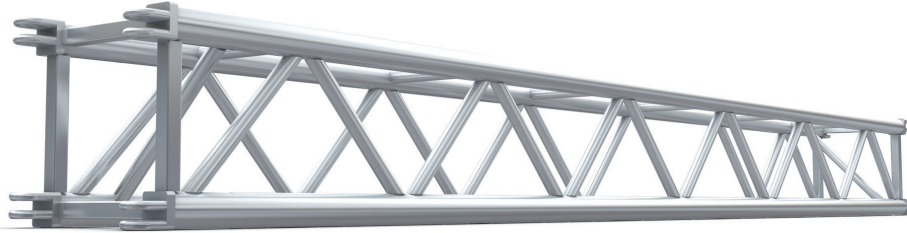


SUPERTRUSS 12 x 12

The revolutionary truss designed to offer all the advantages of the 20.5" SuperTruss in a 12" x 12" layout. The 12" x 12" SuperTruss provides a substantial increase in load bearing capacity over the existing GP 12" x 12" truss. The main chords of the truss are made from 2" x 0.157" 6061T6, and the diagonals are 1" x 0.125".



Standard lengths and weights

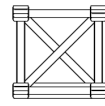
PRODUCT CODE	DESCRIPTION	WT lbs
B1260 R2	12' Section	87
B1261 R2	10' Section	70
B1262 R2	8' Section	67
B1263 R2	6' Section	51
B1264 R2	5' Section	40
B1265 R2	2' 6" Section	26

Truss Accessories

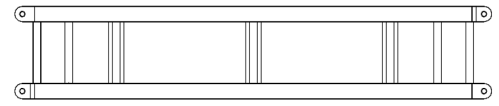
PRODUCT CODE	DESCRIPTION	WT lbs
B1204B	3 Way gate with lifting point load rating at 3,000lbs when loads are applied parallel to the slots in the 3/4" plate	8
B1208	Square support plate	4
B1211	12" SuperTruss to GP 12" x 12" adapter gate	7
G6671A	12" SuperTruss pin extraction tool	7

Corners

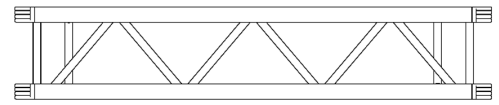
PRODUCT CODE	DESCRIPTION	WT lbs
B1200A	60° corner gate	14
B1201	90° corner gate	8
B1203	135° corner gate	5
B1204A	3 Way gate/ 120° gate	8



End View



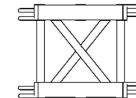
Plan View



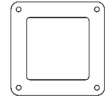
Front View



3 Way corner gate



90° corner gate



Corner plate

Loading chart

Allowable Load Data Span feet	Maximum Allowable Uniform Loads		Maximum Allowable Center Point Loads	
	Loads pounds	Maximum deflection inches	Loads pounds	Maximum deflection inches
10	8496*	0.20	7348	0.20
20	7255	1.50	3628	1.50
30	3324	2.20	1662	2.20
40	1695	2.95	848	2.95
50	888	3.70	445	3.70

LOADING FIGURES show maximum loads between supports in addition to self weight of truss. Information extracted from structural report by Broadhurst, Goodwin & Dunn for SuperTruss manufactured after November 1993. * Denotes load limited to suit maximum shear capacity. All loads include 20% overload factor for dynamic effects.